

Liquid Tight Plugs

Offers protection to IP67

Features

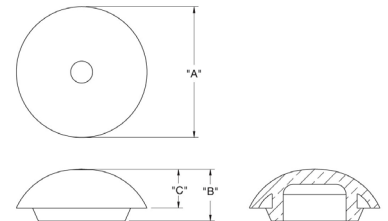
Easy to install with just finger pressure
Offers protection to IP67

Material

Manufactured in black UL94 V0 Silicone Rubber



Part Number	Mounting Hole	A	B	C	Max. Panel Thickness
22-LTP13	12.7	23.4	11.4	7.3	3.2
22-LTP16	15.88	27.6	11.3	8.1	3.2
22-LTP19	19.1	29.2	13	8.9	3.2
22-LTP22	22.23	32	12.7	9.5	3.2
22-LTP25	25.4	35.8	14.2	10.1	3.2
22-LTP28	27.76	39.2	13.7	10.5	3.2
22-LTP35	34.93	46.2	14.7	11	3.2



Push-In Plug

LDPE Push In Plug snaps easily into a 8.5 diameter hole. The low profile design provides an attractive finish with a fitting height of 8.0mm.

Mounting Hole	d	D	h	H
22-PCP8.5/8	8.5	12.0	8.0	9.7

