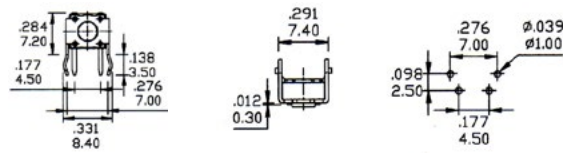


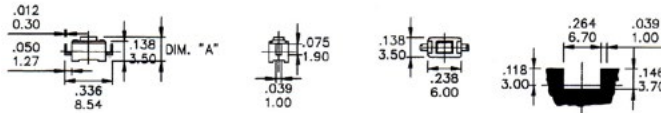
Keypad Switches

KRS 0614 - Right Angle Momentary Tactile.
Through Hole Mount
Stock Actuator Length 3.2mm
Other lengths up to 15.9mm
Part No. 41-KRS0614



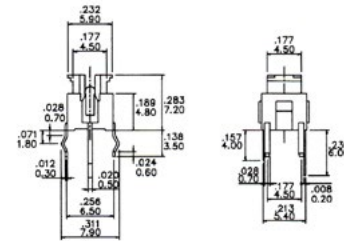
Drilling Pattern

KRS0316 - Edge Mount Tactile.
Surface Mount
Part No. 41-KRS0316



Land Pattern

LP Series - Illuminated Tactile Switch.
Specifications:
Switch: SPST rated 12VDC 50mA
Operating Temp.: -20°C to +70°C
Contact Resistance: 100 milli ohm
Operating Life: 100,000 cycles min.
LED Rating: 20mA 4v.



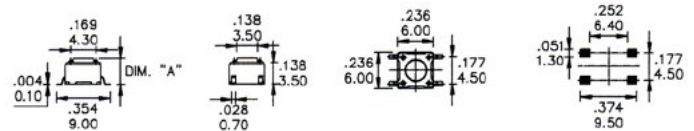
Switch Part Number	LED Colour
41-LP13	No LED
41-LP13R	Red
41-LP13G	Green
41-LP13Y	Yellow

CAPS
Colour: Grey

Part No 41-LP13A

Part No 41-LP13B

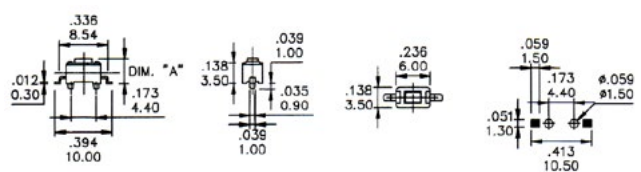
KRSM6 Series - Miniature
Positive Tactile Feel
Surface Mount Device



Land Pattern

Part Number	Height mm above PCB
41-KRSM6-1	4.3
41-KRSM6-2	5.0
41-KRSM6-4	7.3
41-KRSM6-5	9.5

KRSM3 Series - Sub Miniature
Surface Mount Device



Land Pattern

Part Number	Height mm above PCB
41-KRSM3C-1	4.3
41-KRSM3C-2	5.0