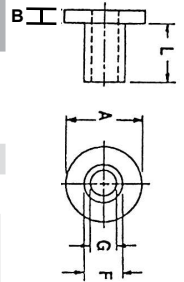


Insulating Washers - Continued

Tough, durable and chemical resistant

Part Number	Material	Screw Size	Sleeve		Length L	Shoulder	
			ID G	OD F		OD A	Thickness B
03-SWS3160	Nylon	M16	16.13	19.0	12.7	22.2	1.6
03-SWS3609	Nylon	M16	16.4	18.9	3	25.4	3.3
03-SWS5050	Nylon	M16	16.4	19.0	12.7	38.7	1.6
03-SWS3205	Nylon	-	17.6	19.9	15.8	25.3	3.2
03-SWS3688	Nylon	-	19.0	22.35	7.9	28.7	1.6
03-SWS3698	Nylon	M20	20.6	25.14	5.6	38.1	3.05
03-SWS3616	Nylon	M20	20.6	22.7	10.3	24.8	3.81
03-SWS3693	Nylon	M20	20.8	25.5	10.7	31.2	4
03-SWS3582	Nylon	-	22.2	25.4	17.5	31.75	1.6
03-SWS4013	Nylon	-	25.8	34.9	15.9	44.5	3.2
03-SWS5003	Nylon	-	33.7	44.27	7.75	50.5	3.28



* = Black Nylon 6/6 ** = UV resistant Black Nylon 6/6

For non-stocked black washers, enquire about our in-house dye service.
Dye charges apply.

Other sizes available with short lead times