

## Push in Fastener

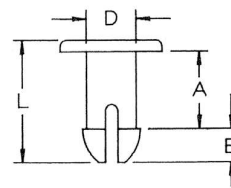
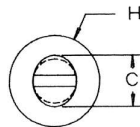
A light convenient method to join insulating materials, light sheet metal, circuit boards, or other light material.

Special designed legs provide compression and expansion to lock fastener into pre-punched holes.

Part Number	Nominal Hole	H	A	B	C	D	L
04-PIF221	2.03	4.8	5.08	1.65	2.64	2.03	7.54
04-PIF219	2.41	6.35	11.30	2.16	3.7	2.41	15
04-PIF236	2.79	4.8	1.7	1.9	2.5	2.3	4.6
04-PIF331	3.15	5.95	2.03	1.78	4.57	3.15	5.21
04-PIF347*	2.92	5.2	3.1	2.7	3.7	2.9	6.6
04-PIF343	2.92	5.2	4.0	3.4	3.6	2.92	8.2
04-PIF346	2.92	5.2	6.4	2.7	3.7	2.92	10.0
04-PIF450*	4.19	8.7	3.2	3.5	5.1	4.19	7.75
04-PIF481*	4.19	8.7	3.2	3.5	5.1	4.19	7.9
04-PIF537	4.57	9.5	16.2	4.6	5.6	4.57	22.2
04-PIF553*	4.45	8.7	6.1	4.4	5.7	4.45	12.5
04-PIF666	6.1	11.5	8.4	4.8	7.5	6.1	14.1
04-PIF686	6.12	12.7	3.96	4.32	7.14	6.12	9.65
04-PIF628	4.45	8.7	22.2	4.4	5.7	4.45	28.3
04-PIF763	6.10	11.5	7.0	3.6	7.5	6.1	11.7
04-PIF765	6.22	15.1	12.2	4.45	7.4	6.22	18.2

**Material: Nylon 6/6**

\* = Black Available. Add suffix B to part number.



## Snap Clips

A combination of tough acetal and a resilient design give these clips a positive snap and more definite grip when inserted

Part Number	Hole Size	Panel Thickness	Head Diameter D	Length B	Head Height A
04-PSN3008	3.2	0.8	6.3	6.3	1.5
04-PSN3016	3.2	1.6	6.3	7.1	1.5
04-PSN3024	3.2	2.4	6.3	7.9	1.5
04-PSN3032	3.2	3.2	6.3	8.7	1.5
04-PSN4008	4.0	0.8	8.0	7.1	1.5
04-PSN4016	4.0	1.6	8.0	7.9	1.5
04-PSN4024	4.0	2.4	8.0	8.7	1.5
04-PSN4032	4.0	3.2	8.0	9.92	1.5
04-PSN4040	4.0	4.0	8.0	10.3	1.5
04-PSN5008	4.8	0.8	8.0	7.9	1.5
04-PSN5016	4.8	1.6	8.0	8.7	1.5
04-PSN5024	4.8	2.4	8.0	9.5	1.5
04-PSN5032	4.8	3.2	8.0	10.3	1.5
04-PSN5040	4.8	4.0	8.0	11.1	1.5
04-PSN5048	4.8	4.8	8.0	11.9	1.5
04-PSN6016	6.3	1.6	12.7	10.7	1.5
04-PSN6024	6.3	2.4	12.7	11.5	1.5
04-PSN6032	6.3	3.2	12.7	12.3	1.5
04-PSN6040	6.3	4.0	12.7	13.1	1.5
04-PSN6048	6.3	4.8	12.7	13.9	1.5

**Material: Natural Acetal (Off White)**

